

# Upcoming PACE Events

## THE EMPATHY PROJECT

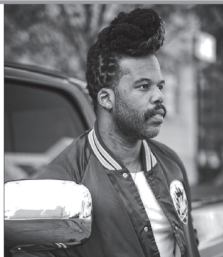


**FEBRUARY 23** The people of St. Louis, one photo & story at a time. Since their founding two years ago, Humans of St. Louis have shared over 900 stories, inspired over 67,000 followers, sparked dialogue, facilitated civic engagement, connected followers to local needs, causes, and volunteer opportunities. HOSTL are committed to fostering a respectful online community where visual-virtual storytelling is the platform for discussion and civic engagement around local issues, including economic development, public health, social justice, and human rights.

\$5 general admission • \$2 students/seniors

## CASEY BENJAMIN

SPRING JAZZ SHOWCASE



**MARCH 9** Casey Benjamin is an American saxophonist, vocoderist, keyboardist, producer and songwriter. He is a member of the Robert Glasper Experiment which won a Grammy Award for Best R&B Album for their album Black Radio. Benjamin will perform along with the Jefferson College Jazz Ensembles directed by Dr. Joel Vanderheyden.

\$5 general admission • \$2 students/seniors

## 48 HOUR FILM FESTIVAL



FILM FESTIVAL:  
**MARCH 10 - 12**  
FILM SCREENING:  
**APRIL 7** 7 PM  
FINE ARTS THEATRE

Form a team of 5 or less and write, film & edit your project in 48 hours! Specific guidelines will be given for your film. Present your creation and win fabulous prizes! Anyone can enter. For more information contact Nick Nihira: [nnihira@jeffco.edu](mailto:nnihira@jeffco.edu)

Jefferson College Theatre Department Presents

# ANTIGONE

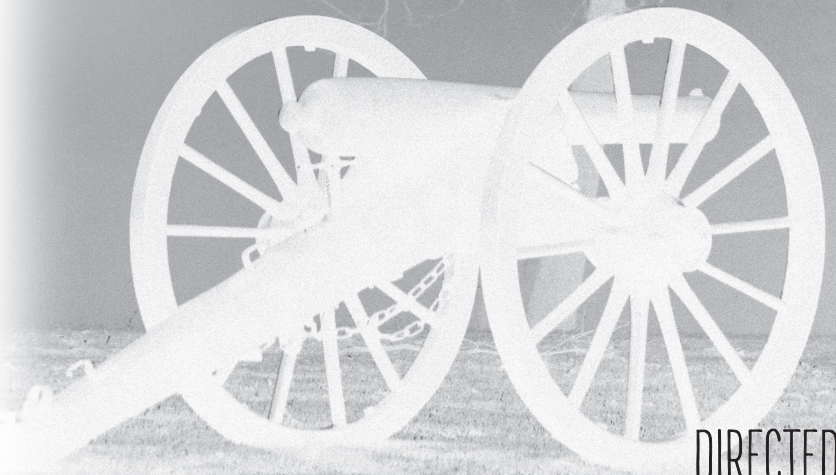
**FEBRUARY 16 - 19**

FEBRUARY 16, 10 AM

FEBRUARY 17 - 18, 8 PM

FEBRUARY 19, 2 PM

FINE ARTS THEATRE



DIRECTED BY  
REBECCA ELLISON

[www.jeffco.edu/PACE](http://www.jeffco.edu/PACE)

(636) 481-3000 or 797-3000, ext. 3000



It is the policy of Jefferson College that no person shall, on the basis of age, ancestry, color, creed, disability, genetic information, marital status, national origin, race, religion, sex, sexual orientation, or veteran status, be subject to discrimination in employment or in admission to any educational program or activity. Note: If accommodations for a disability are needed contact the Disability Support Services Coordinator, Office - Library 110, (636) 481-3169 or 797-3000, ext. 3169 or [cplatter@jeffco.edu](mailto:cplatter@jeffco.edu).

# NOTE FROM THE DIRECTOR

Thank you for joining us in our production of the Greek tragedy *Antigone*. We decided to set the production during the US Civil War...brother against brother...war in order to escape oppression. While both the Greek tragedy and the US Civil War were so long ago, the events of the play provide illumination to many current, relevant events in the United States. It is an important message to hear, see, and learn from.

The tragedy *Antigone* was written around 442 B.C. by Greek playwright Sophocles. Only seven of his one hundred-twenty-three plays have survived, and the three tragedies that comprise the Theban Trilogy (*Oedipus the King*, *Oedipus at Colonus*, and *Antigone*) are the most frequently performed. Plays were presented at the Great Dionysia, a festival to honor the god of fertility, wine, and theater, in Athens. The audience attended the plays out of civic responsibility, and even criminals were released from prison to attend. Sophocles won first prize at the festival for his tragedy *Antigone*, and he enjoyed enormous success.

The Greek audience would have been familiar with the legend of Oedipus and his family, but Sophocles may have drawn upon the mythic character to comment on the dangers of tyranny. *Antigone* and *Ismene* are the daughters of Oedipus, the former king of Thebes, who unknowingly kills his father and marries his mother. Upon discovering his transgressions, he blinds himself and renounces his Kingdom leaving Thebes to be ruled by his sons. Eteocles and Polyneices, his sons, arrange a power-sharing agreement by alternating the throne from one year to the next. The brothers fail to honor the agreement and end up at war with one another.

This play opens before sunrise outside the palace at Thebes. The two brothers who have killed one another, and the crown is now claimed by their uncle Creon. Polyneices fought against Thebes, and Creon has ordered that his corpse remain unburied, condemning his spirit to wandering for one hundred years. Sophocles pits *Antigone's* dedication to her family and tradition against Creon's objectives of preserving power and quelling rebellion. The tragic consequences of this conflict have intrigued audiences for over two thousand years.

One aspect of early Greek work was the use of a chorus. The chorus is a convention used in Greek drama that consists of several actors who comment on and interpret the events of the plot. The Greek word *choros* translates as "dance," and often the chorus functioned as a character in the drama, or depicted a group of citizens similar to the audience. In *Antigone*, Koryphaios, the chorus leader, is a character in the play. The rest of the chorus are Theban advisers who, at times, are loyal to Creon, the king, and then *Antigone*, his niece. This indecision highlights conflicts that Sophocles explores in the play.

# CAST

|                                 |   |
|---------------------------------|---|
| Antigone .....                  | Whitney Wolcott   |
| Ismene, her sister .....        | Laila Alvarado  |
| Chorus .....                    | Tiffany Vonderahe, Hayden Onstott, Melissa Brouk<br>Matthew Bell, Emma Van Doren, Madison Evans |
| Creon, king of Thebes .....     | Bradley Bliven  |
| Leader .....                    | Desiree Terry   |
| Sentry .....                    | Madison Evans   |
| Guards .....                    | Hayden Onstott, Matthew Bell  |
| Haemon, Creon's son .....       | Skyler Hunt   |
| Tiresias, a blind prophet ..... | Brandon Menke   |
| Servant to Tiresias .....       | Melissa Brouk   |
| Messenger .....                 | Matthew Bell  |
| Eurydice, Creon's wife .....    | Emma Van Doren  |

# CREW

|                        |  |
|------------------------|--|
| Director .....         | Rebecca Ellison  |
| Scenic Design .....    | Rebecca Ellison, Rob Welch   |
| Set Construction ..... | Rob Welch, Dustin Reid, Hayden Onstott<br>Joel Speth, Brian Welch, Jason Welch |
| Stage Manager .....    | Joel Speth   |
| Light Technician ..... | Jonathan Lucas   |
| Sound Technician ..... | Logan Colten   |

Special Thanks to Chris Otto, Associate Professor of English, for serving as our Dramaturg. Working in theatres and playwrights' organizations, in colleges and universities, and on a project-by-project basis, dramaturgs contextualize the world of a play; establish connections among the text, actors, and audience; offer opportunities for playwrights; generate projects and programs; and create conversations about plays in their communities.

Special Thanks to Char Snodgrass, Ladies Union Aid Society, Turner Brigade, for loaning costumes and props

Special Thanks to Barbara Killius, for loaning costumes

Special Thanks to Suzie Welch for creating costumes and her incredible support of the Theatre Department!

There will be a 15 minute Intermission between Acts.