

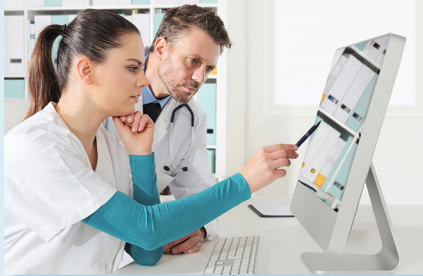
**Train for a Career in the Healthcare Field!**

**Certified Nurse Assistant (CNA)**



The Certified Nurse Assistant (CNA) Program is designed to teach students how to perform basic nursing skills for residents in a long-term care facility under the supervision of Charge personnel. This eight-week course meets the requirements mandated by the Missouri Department of Health and Senior Services.

**Medical Assistant Program (MA)**



This hybrid, innovative course prepares students for employment as a Certified Clinical Medical Assistant or a Certified Medical Administrative Assistant. Course consists of 510 hours of online instruction, 40 hours of instructor led Pre-Clinical Academy, and 130 to 180 hours of on-site clinical experience. It is anticipated student will complete training program in 12 months or less.

**Certified Medication Technician (CMT)**



The Certified Medication Technician program prepares individuals for employment as a CMT in an intermediate or skilled care nursing facility. This program consists of at least 60 classroom hours of instruction and a minimum of 8 hours of clinical practice under the direct supervision of an instructor.

**PREREQUISITE:** Must be a Certified Nurse's Aide for at least 6 months prior to admission and maintain CNA employment throughout the training.

**Pharmacy Technician (with ASHP/ACPE)**



This 400 hour online training program instructs students on accurately and efficiently preparing prescription orders, verifying prescription information, entering patient and order information into the pharmacy system, processing and submitting insurance claims, and providing quality customer service to patients and other healthcare providers. Program offers externship

with Walgreens or CVS. Student must have access to computer and internet service.



- Certified Nurse Assistant (CNA)**
- Certified Medication Technician (CMT)**
- Medical Assistant (MA)**
- Pharmacy Technician**

**Call the office at (636) 481-3144 or visit us online at [jeffco.edu/jcce](http://jeffco.edu/jcce)**