



# The Windjammer

Jefferson College

1000 Viking Drive  
Hillsboro, MO 63050  
(636) 481-3000 or 797-3000  
[www.jeffco.edu](http://www.jeffco.edu)

October 2017

## College to Host Manufacturing Day Oct. 13 – *Education, Jobs, and Economic Development Vital to Jefferson County*

In an effort to provide job-related resources and highlight the importance of manufacturing careers as an economic development and educational opportunity in our region, Jefferson College will host Manufacturing Day on Friday, October 13, from 9 a.m.-noon in the Field House on the Hillsboro campus.

The purpose of Manufacturing Day, celebrated nationally each October, is to provide recognition of individual manufacturers and coordinate a collective to empower them to address common challenges, including public perceptions of manufacturing careers and the industry's value to the local, regional and national economy.

The event is part of an ongoing emphasis to change people's perceptions about today's manufacturing environment and draw attention to the outstanding opportunities that a career in manufacturing can provide.

There is no cost to participate in Manufacturing Day. Online registration is available at [www.surveymonkey.com/r/JCMFGDay](http://www.surveymonkey.com/r/JCMFGDay).

The day will feature demonstrations of robotics and 3D printing, career and employer information, an employer panel discussion, and tours of manufacturing companies in Jefferson County, in order to promote employment opportunities and products made in Jefferson County. Faculty and staff members from Jefferson College's many Career and Technical Education programs will also showcase curriculum that prepares students for high-wage careers in advanced manufacturing.



**Manufacturing Day**

Jefferson College

**OCTOBER 13, 2017**  
**9 AM – 2 PM**  
**JEFFERSON COLLEGE FIELD HOUSE**

*Open to the Public!*

Jefferson College is hosting Manufacturing Day, an annual celebration of modern manufacturing meant to inspire the next generation of manufacturers.

The day will feature employer information and products in addition to employer panels and demonstrations. Also featured will be live demos of robotics, 3D printing, manufacturing career information, and manufacturing company tours.

SCHEDULE		EMPLOYER PARTNERS INCLUDE
9:00 AM	Open House with Employers	Metal Container - Arnold
10:15 AM	Presentation/Lunch/Employer Panel	LMC Industries - Arnold
12:00 PM	Depart for Company Tours	Koller Enterprises - Fenton
12:30 PM	Tours @ Manufacturing Companies	Ardagh Group - Pevely
1:45 PM	Return to Jefferson College	Good Earth Tools - Festus
		And More!

**Register Online Now!** [www.surveymonkey.com/r/JCMFGDay](http://www.surveymonkey.com/r/JCMFGDay)

### Manufacturing Day Schedule – Jefferson College Field House (Hillsboro)

9 a.m. – open house with employers  
10:15 a.m. – presentation/lunch/employer panel  
Noon – depart for company tours  
1:45 p.m. – return to Jefferson College

Among the variety of participating employers are Metal Container of Arnold, LMC Industries of Arnold, Koller Enterprises of Fenton, Ardagh Group of Pevely, Arnold Job Center, Danger Gone, DRS Marlo, Haake, Heizer, HJ Enterprises, JSI, Masterchem, MDM, Metal Container, Production Castings, Western Wire, TRUE, and Good Earth Tools of Festus.

As Jefferson County's foremost provider of higher education, Jefferson College is leading the way to showcase the advancements and opportunities in modern manufacturing and promote interest in manufacturing careers.

# The Road to Student Success...Project SUCCESS 20th Anniversary

Jefferson College recently hosted a celebration to highlight the 20th anniversary of the Project SUCCESS (Students Utilizing Career Counseling and Educational Support Services) program that has helped over 1,400 students achieve academic and personal success.

The event included remarks by College President Dr. Raymond Cummiskey and Director of Student Support Services Dr. Diane Arnzen, a slide show highlighting previous participants, a video with reflections from past and present program personnel, music by the Jefferson College Jazz Combo IDK, and light refreshments.

The federally funded Student Support Services (SSS) grant was initially awarded to the College in 1997 and subsequently renewed four times. The program provides intense academic and personal support to students who are first-generation, low-income and/or who have a documented disability. Additionally, students must be planning to earn an Associate's Degree from Jefferson College and transfer to a four-year college or university.



Project SUCCESS participants have one advisor throughout their time at Jefferson College and receive individualized advising and personal support. Beyond academic advising, other services include: tutoring, help with scholarship searches, transfer assistance, transfer visits to area universities, a course on community exploration and service, financial literacy training, and opportunities to experience cultural events in the local community.



# Law Enforcement Academy Graduates Prepared to Serve

After completing a vigorous and comprehensive curriculum filled with numerous tactical exercises using the latest instructional technology, a class of seven students (023 POST Peace Officer Standards and Training Class) recently graduated from the Jefferson College Law Enforcement Academy in Imperial, helping to fill the ongoing need for qualified officers in Missouri.

The 023 class also achieved a 100 percent completion pass rate on the POST (Peace Officer Standards and Training) license exam, continuing the lengthy streak of graduating classes from Jefferson College with a 100 percent pass rate for the POST Class A license.

The JCLEA offers three options for students seeking a Missouri Department of Public Safety POST Class A License and is the only academy in the state that incorporates the curriculum for an Associate of Applied Science Degree in Criminal Justice in two of its three



programs as a way to distinguish graduates when they enter the job market. The third program, a POST curriculum only option, offers a Certificate in Criminal Justice and is limited to applicants who already have a two or four-year degree.

In addition to the basic training for students entering the field, the Academy's goal includes providing high quality training to law enforcement personnel, inspiring professionalism in all peace officers, and providing civilian personnel with education and training prior to employment or association with a law enforcement agency.

For more information about the Law Enforcement Academy and upcoming application deadlines, call (636) 481-3425 or visit [www.jeffco.edu/jclea](http://www.jeffco.edu/jclea).

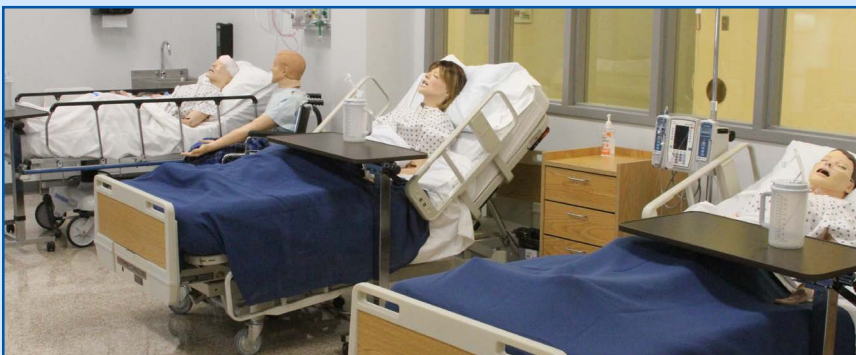
# Ribbon Cutting/Open House Highlight Nursing Simulation Lab Renovation

As a regional leader in healthcare education, Jefferson College recently hosted a ribbon cutting ceremony and open house to unveil the newly renovated and expanded NEST (Nursing Education Simulation Technology) lab on the Hillsboro campus.

As part of Jefferson College's ongoing Strategic Planning Capital Project process, the NEST lab renovation will significantly advance student training necessary to meet the needs of workforce partners throughout the region.

Among the improvements to the NEST lab are additional simulation rooms, high fidelity simulation manikins, debriefing conference room, nursing station, home health area, medication room, and increased storage capacity. The Nursing program does not presently have the capacity to house concurrent simulations.

"The new NEST lab duplicates what patients find in a hospital setting, enabling students to apply classroom and clinical skills to the real world, said Director of Nursing Kathleen Harris. "Our graduates will enter the workforce better trained and ready to provide the highest level of care."



A portion of the funds for the renovation came from a \$150,000 grant awarded by the Department of Higher Education and the Missouri Board of Nursing to increase the number of nurses in Missouri. Jefferson College was one of only six colleges and universities across the state to receive the grant.

In recent years, the Jefferson College Nursing program has undergone a revitalization with a revamped curriculum, an emphasis on skills development and academic needs of students, introduction of state-of-the-art patient simulation equipment, and the leadership of highly qualified faculty who are working to bring a wide range of professional experiences to the classroom.

Since the early 1970s, the program has enabled thousands of area residents to pursue highly successful careers at many of the top healthcare facilities in Jefferson County and the surrounding St. Louis region.



# Nursing Program PN Graduates – Pinning Ceremony Signifies Excellence



After successfully finishing a comprehensive and challenging curriculum, a group of 25 students from across the area recently was pinned in a ceremony marking their completion of the level I/ Practical Nursing portion of the Jefferson College bi-level Nursing program.

Those who complete one year of training receive a career education certificate and may become a licensed practical nurse after successfully completing the state board examination. Students who complete the second year of the program receive an Associate of Applied Science degree and are eligible to take the state licensing exam for registered nurses.

The program focuses on relevant, industry-focused curriculum; tremendous clinical practicum experiences at sites throughout the region; state-of-the-art patient simulation labs; and individualized academic and personal support services. The program also offers flexible advancement from PN to RN to BSN thanks to Jefferson College's educational partnership with Central Methodist University.

Both of the Level I/PN and Level II/RN programs have full approval from the Missouri State Board of Nursing (MSBN). For more information about the Jefferson College Nursing program and admission requirements, visit [www.jeffco.edu/nursing](http://www.jeffco.edu/nursing).

# Medical Mission Trip to Haiti Led by Nursing Professor

Jefferson College Nursing Assistant Professor/RN Student Coordinator Barb Haynes RN, MSN, of DeSoto recently led a team of 10 on a medical mission to Haiti sponsored by Kingdom Warriors Ministries of De Soto.

During their eight-day trip, the team hosted four medical clinics in mountainous areas of the country, where there were poor roads and difficult access, caring for over 1,100 Haitians. The major health issues identified were unclean water sources, severe nutritional deficits, and an inadequate medical infrastructure throughout most of the country.



*Jefferson College Nursing Assistant Professor/RN Student Coordinator Barb Haynes RN, MSN (left) provides medical attention to a young mother and her daughter during a mission trip to Haiti sponsored by Kingdom Warriors Ministries of De Soto.*

In addition to Haynes, the College was represented by Assistant Nursing Professor Sheryl Zysk APRN, of St. Louis County, and recent Jefferson College Nursing graduates Kristen Sides RN, of DeSoto, and Cassie Campbell RN, of Festus.

Other team members included Rev. Rick Haynes of DeSoto, director of Kingdom Warriors Ministries; Dr. Joy Stowell M.D. of St. Peters; and Jerry Wooten CMT; Melanie Holmes MA; Kris Watt; and Rev. Kelly Hardcastle of Troy, Missouri.

# JOB FAIR FOR HEALTHCARE CAREERS

## HEALTHCARE JOB FAIR

The Healthcare Job Fair will focus on industries supporting our Health Occupations programs.

**Thursday, November 2, 2017**

**1:30 - 5:30 PM**

Jefferson College Hillsboro

Career & Technical Education Building (CTE) Rooms 100, 102 & 114

**Free Admission!  
Community Welcome!**

### FOR MORE INFORMATION:

LORA WARNER  
EMPLOYMENT SPECIALIST  
[LWARNER@JEFFCO.EDU](mailto:LWARNER@JEFFCO.EDU)  
(636) 481-3223

1000 VIKING DRIVE  
HILLSBORO, MO 63050

[JEFFCO.EDU/EMPLOYMENTSERVICES](http://JEFFCO.EDU/EMPLOYMENTSERVICES)

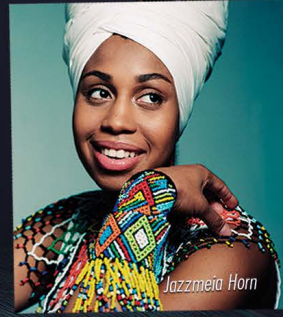


PERFORMING ARTS **AND** CULTURAL ENRICHMENT

October 12-15	Fall Play "Extremities" 10/12 @ 9:30am, 10/13 @ 8pm, 10/14 @ 8pm, 10/1 @ 2pm
October 22 @ 3pm	Choir Concert "Choral Perspectives: An Eclectic Approach" <b>FREE!</b>
October 24 @ 7:30pm	Band Concert "Old School" <b>FREE!</b>
October 26 @ 7:30pm	Jazz Faculty Concert <b>FREE!</b>
November 5 @ 3pm	Fall Back into Jazz <b>FREE!</b>
November 18-19	Children's Play "Cheer Up, Santa" 11/18 @ 2pm, 11/19 @ 2pm
December 5 @ 7:30pm	Band Concert "Renaissance Reconnaissance" ft. soloist Kirk Hanser <b>FREE!</b>
December 7 @ 7pm	Community Jazz Project <b>FREE!</b>
December 10 @ 3pm	Choir Concert "Sounds of the Season" <b>FREE!</b>
January 21 @ 3pm	Vocal Edge — <i>a cappella sensation</i>
February 6 @ 7pm	"Drumming Cultures of the World" Ft. Matt Henry — <i>experience rhythms from around the world</i>
February 22-23	Cabaret & Concert with Keith Boyer — <i>a peek behind the scenes of concert &amp; cabaret</i>
March 1-4	Spring Play "Love/Sick" 3/1 @ 10am, 3/2 @ 8pm, 3/3 @ 8pm, 3/4 @ 2pm
March 11 @ 3pm	Choir Concert "Masterworks Performance" <b>FREE!</b>
March 13 @ 7:30pm	Band Concert "Where Art Inspires Art" <b>FREE!</b>
March 15 @ 7:30pm	Spring Jazz Showcase ft. Jazzmeia Horn — <i>award-winning jazz artist</i>
April 14 @ 2 & 6pm	Jefferson County Shakespeare Project "A Midsummer Night's Dream"
April 20 @ 7pm	48 Hour Film Festival Screening Kickoff: 3/16 @ 5pm, Filming: 3/16-18 <b>FREE!</b>
April 23	Student Art Exhibition <b>FREE!</b>
May 8 @ 7:30pm	Band Concert "The Movement of Music" ft. Saint Charles Community College Concert Band with James A Martin, Conductor <b>FREE!</b>
May 10 @ 3pm	Choir Concert "A Celebration of Song" <b>FREE!</b>
Dates TBA	Student Pottery Sale <b>FREE!</b>



Keith Boyer



Jazzmeia Horn



**SEASON PASS**  
**\$25** GENERAL ADMISSION  
**\$15** STUDENTS AND SENIORS

Call Today! (636) 481-3123  
[jeffco.edu/pace](http://jeffco.edu/pace)

JEFFERSON COLLEGE ATHLETICS

# TRIVIA NIGHT

Saturday, Nov. 4th

7:00 PM

(Doors open at 6:00 PM)

Jefferson College Field House

GO VIKINGS



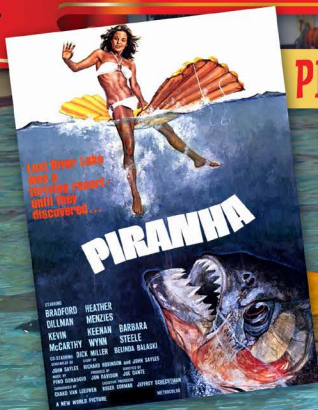
**Register Today!** [www.jeffco.edu/athletics](http://www.jeffco.edu/athletics)

## POOL MOVIE NIGHT / OPEN HOUSE

OCTOBER 28  
7-10PM

PIRANHA (1978)

JOIN US!



**Jefferson College Field House – Hillsboro Campus**  
**Admission: \$5 (ages 16 and older)**

### FOR MORE INFORMATION

Michelle Cobb – Aquatics Programs Coordinator

(636) 481-3209

[mcobb@jeffco.edu](mailto:mcobb@jeffco.edu)

[www.jeffco.edu/pool](http://www.jeffco.edu/pool)



# BOARD OF TRUSTEES

## September Report

All monthly agenda items and supporting materials are posted [online](#) via the [BoardDocs](#) site accessible through the Jefferson College website homepage at [jeffco.edu](#) clicking on “Welcome” > “About Jefferson College” > “Board of Trustees” links.

### *Agenda items approved:*

- Approval of Consent Agenda Items (Minutes, Financial Statements, Faculty Load, and Curriculum Matters)
- Setting of the Tax Levy for Tax Year 2017
- Addition of Women’s Soccer Program
- Financing for Portion of Library Renovation
- Purchase - Sim Manikin for NEST
- Purchase - Hospital Beds for NEST
- Purchase - Automobiles for LEA Program
- Agreement with Comfort Inn for Hotel Accommodations
- Installation of Spark Arrestors for Welding Lab
- Appointment of Automotive Technology Faculty (Temporary)
- Resignation of First Assistant Baseball Coach
- Renewal of Memorandum of Agreement with Missouri Baptist University

### *Remaining 2017 Board Meetings:*

- October 12 – 6:30 p.m.,
  - November 19 – 6:30 p.m. (JCA),
  - December 14 – 5:30 p.m.
- All meetings are open to the public.



A DECADE OF DEDICATION

*Save the Date*

**OPEN HOUSE CELEBRATION**

**THURSDAY, NOVEMBER 9, 4 – 7PM**  
**JEFFERSON COLLEGE ARNOLD**

**ALL FACULTY & STAFF INVITED TO ATTEND**



## BOARD OF DIRECTORS

### OFFICERS:

Richard B. Francis  
*President*

Jennifer Collins Hansen  
*Vice President*

Michael W. Walsh  
*Treasurer*

Michael G. Kumpf  
*Secretary*

Richard S. Vest  
*Past President*

Ron Scaggs  
*Trustee Liaison*

### MEMBERS:

Thomas R. Dixon

Robert W. Francis

Julia C. Hampton

Ronald L. Holland

Dennis J. Kehm

Michelle A. Kennen

Alan R. Loeffelman

Steven A. Markus

Lt. Col. Steve Meinberg

Brandon T. Moonier

Glenda M. Potts

Carol A. Schanz

Jack C. Stewart

Gary M. Underwood

## JEFFERSON COLLEGE

Dr. Raymond Cummiskey  
*President*

Richard H. Hardin Jr.  
*Controller*

Patti Christen, CFRE  
*Executive Director of Development*

Tricia Fromm  
*Development Assistant*

# Jefferson College FOUNDATION

## 30th Annual Viking Classic Golf Tournament is Stellar Headlined by Former Cardinals Pitcher Andy Benes

Thank you to Presenting President's Cup Sponsor Dobbs Tire and Auto Centers, former St. Louis Cardinals Pitcher Andy Benes, and the tremendous generosity of players, numerous business sponsors, and volunteers who helped make the 30th annual Viking Classic Golf Tournament at Fox Run Golf Club a stellar success.



In addition to the presenting President's Cup Sponsor, Major Event Sponsors included Home Service Oil Company, Production Castings, Midwest Regional Bank, Foodservice Consultants, and H-J Enterprises.

\$23,000 in proceeds from the annual tournament will provide scholarships and quality programs that directly benefit students attending Jefferson College. The golf tournament is part of the annual campaign to raise funds to promote and support all educational programs; to provide state-of-the-art equipment and facilities; and to ensure access through scholarship funds to needy students.

The College and Foundation are extremely grateful for the generous support of this year's sponsors and 33 participating teams.

Supporting Jefferson College students is a great investment in Missouri's economy. Most students are local residents, and the vast majority find employment or continue their education in the region after graduating. The College prepares full-time and part-time students to enter the job market, to transfer to four-year colleges and universities, and to achieve their professional and personal goals. Programs and services support the economic growth of the community in response to changing needs.



# New Scholarships Create Lasting Legacy of Loved Ones

Three new named scholarships were established recently through the Foundation in honor of family members and loved ones:

**The Wes Griffith Memorial Fund**  
**The R.E. Harris Memorial Nursing Scholarship**  
**Glenda L. Poullain Scholarship**

Today more than ever, there is a need for student scholarship support. Many Jefferson College students are first-generation college students who are balancing a job, family and career preparation. Scholarship support not only helps with tuition and college expenses— it demonstrates that someone believes in them—and their ability to succeed in college.

Your tax-deductible donation to the Foundation provides the support our hard-working, dedicated students need to keep his or her life on track. At Jefferson College, students who ask for help get the help they need! Contributions to the Jefferson College Foundation's Annual Appeal truly has a positive impact on the lives of our students.

Would you like to receive information on setting up a lasting legacy in honor of a loved one? Call Executive Director of Development Patti Christen today at (636) 481-3104.

For information about applying for a scholarship, contact the Financial Aid Office at (636) 481-3212.

## Building Our Presence Brick by Brick

The Jefferson College Foundation held a dedication/unveiling ceremony recently as part of the "Brick by Brick" program to recognize the most recent donors who have made a contribution to honor a loved one, friend, family member, graduate, co-worker, or someone they hold in high esteem.

Thank you to the following donors: Trish Aumann, Stacy Bogier, Patti Christen, the Eclipse Task Force, Chris Lile, Betty Linneman, and Lois Underwood.

Bricks are available for \$100 each and can be purchased online at [www.jeffco.edu/foundation](http://www.jeffco.edu/foundation) or at the Foundation office via cash or check. The gift provides a lasting tribute to any person(s) of honor.





# October 2017

SUNDAY	MONDAY	TUESDAY	WEDNESDAY	THURSDAY	FRIDAY
<b>1</b> <b>Baseball vs. Drury</b> 1 PM, Baseball Field <b>Soccer vs. STL Football Club Academy</b> Noon, Soccer Field	<b>2</b> <b>PACE</b> <i>Grace Kelly</i> 7 PM Fine Arts - Theatre	<b>3</b>	<b>4</b>	<b>5</b>	<b>6</b> <b>FRIDAY SPEAKER series</b> <i>Chuck Berry</i> 11:45 AM Viking Room
<b>8</b>	<b>9</b>	<b>10</b> <b>Volleyball vs. Mineral Area</b> 6:30 PM Field House - Gym	<b>11</b> <b>Softball vs. MoBap</b> 2 PM Softball Field	<b>12</b> <b>Board of Trustees Meeting</b> 6:30 PM ADM- Board Room	<b>13</b> <b>MFG Day</b> 9 AM - 2 PM, Field House, Gym <b>Soccer vs. Lincoln</b> 3 PM, Soccer Field
<b>Fall Play "Extremities"</b> Thursday 9:30 AM Friday 8 PM • Saturday 8 PM					
<b>15</b>	<b>16</b>	<b>17</b>	<b>18</b>	<b>19</b> <b>Volleyball vs. MSU West Plains</b> 6:30 PM Field House - Gym	<b>20</b> <b>Volleyball Halloween Classic</b> Friday 2 PM • Saturday 9 AM Field House, Gym
<b>Fall Play "Extremities"</b> Sunday 2 PM Fine Arts Theatre					<b>21</b> <b>Baseball - Marathon Game (Family Weekend)</b> 11 AM, Baseball Field
<b>22</b> <b>PACE</b> <b>Choir Concert</b> <i>"Choral Perspectives: An Eclectic Approach"</i> 3 PM Fine Arts - Theatre	<b>23</b>	<b>24</b> <b>PACE</b> <b>Band Concert</b> <i>"Old School"</i> 7:30 PM Fine Arts - Theatre	<b>25</b>	<b>26</b> <b>PACE</b> <b>Faculty Jazz Concert</b> 7:30 PM Fine Arts - Theatre	<b>27</b> <b>Region XVI Volleyball Championship Tournament</b> Friday 7 PM • Saturday NOON Field House, Gym
<b>29</b> <b>PTK Fall Induction Ceremony</b> 2 PM Fine Arts - Theatre	<b>30</b>	<b>30</b>	<b>1</b> <b>Red Cross Blood Drive</b> 9 am - 3 pm Viking Room	<b>2</b> <b>Fall Healthcare Job Fair</b> 1:30 pm - 5:30 pm CTE Building <b>Basketball vs. Wabash Valley</b> 5:30 pm, Gym	<b>3</b> <b>Volleyball Districts</b> 7 PM Field House - Gym
					<b>4</b> <b>Pool Movie Night</b> 7 - 10 pm Field House, Pool

